

RoHS

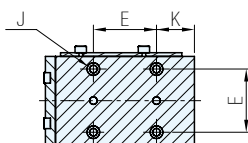
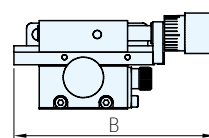
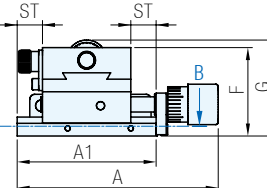
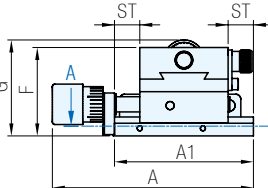
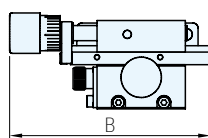
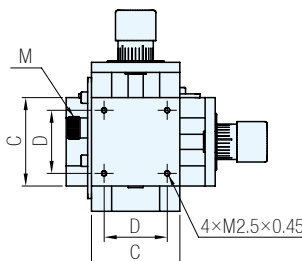
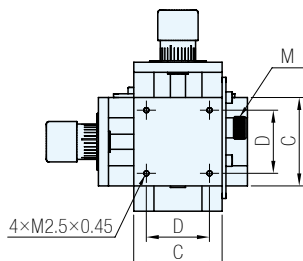
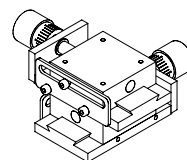
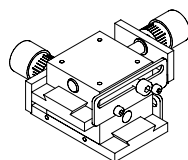
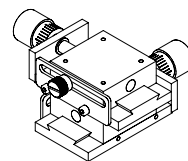
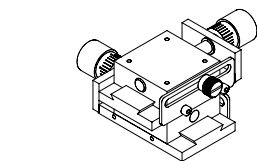
壓花螺絲

內六角螺絲

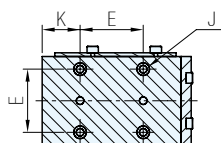


L(左側)

R(右側)



A-A



B-B

品號	檯面 C	A	A1	B	D	E	F	G	J	K	ST	M 固定螺絲	備註	軸位
AFF-0012	35	(79.6)	55.5	(79.6)	25	25	35	38	表面4×φ5 深3沉孔, φ3貫穿	15	10	內六角螺絲	直式XY軸	L(左側)
AFF-0013														R(右側)
*AFF-0032														L(左側)
*AFF-0033		R(右側)												
AFF-0018		(99.6)	75.5	(99.6)	25	25	35	38		25	20	內六角螺絲		L(左側)
AFF-0019														R(右側)
*AFF-0038									L(左側)					
*AFF-0039												壓花螺絲		R(右側)

Ps. 備註

- 材質、規格表等詳細資料請參閱AFF首頁
- * 記號側邊鎖固螺絲標配壓花螺絲，可用一字起子或手直接調整；可改選成內六角螺絲，請洽詢

訂貨： 交期：

AFF-0012